

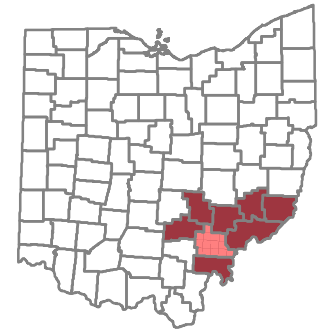
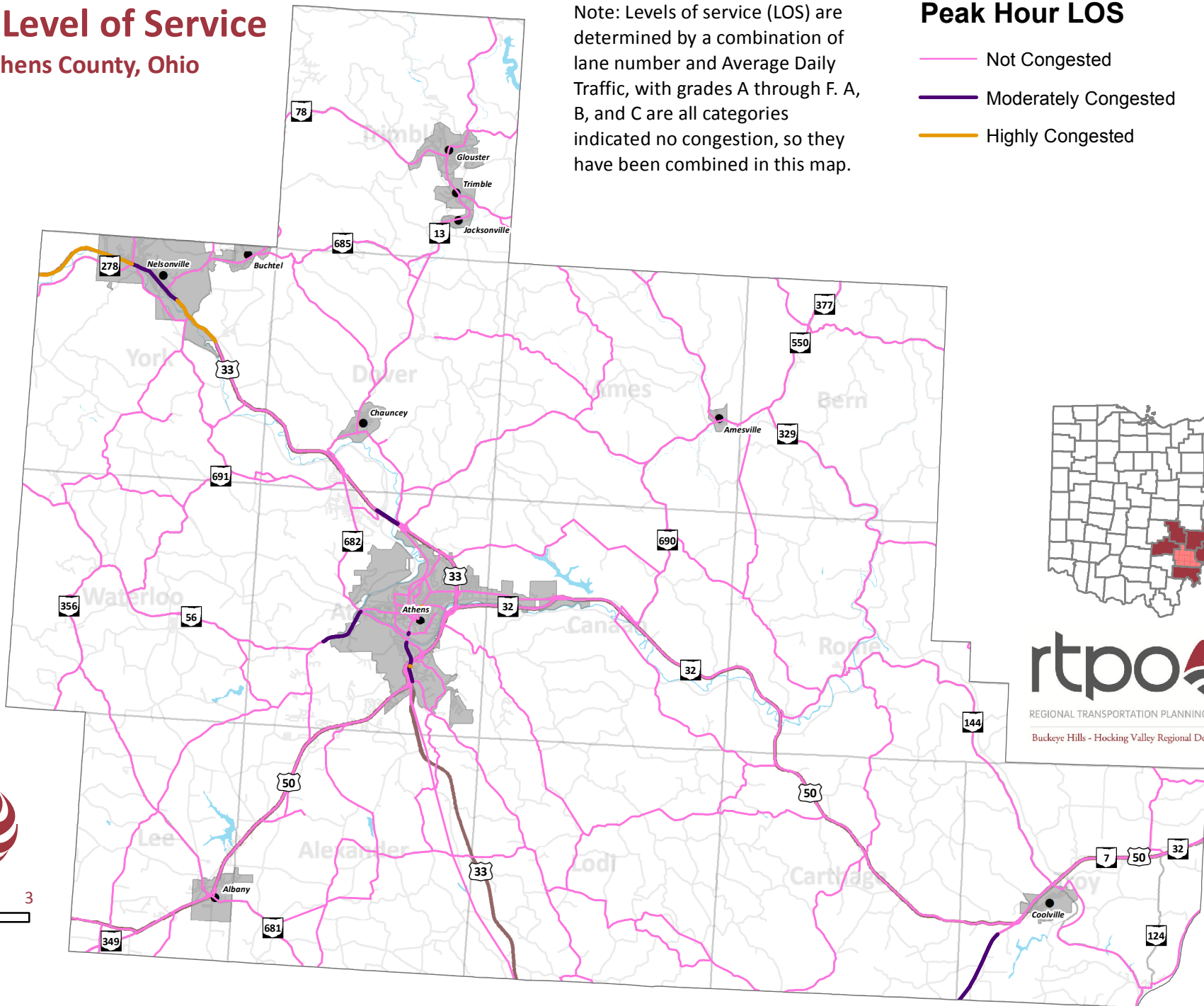
2040 Level of Service

Athens County, Ohio

Note: Levels of service (LOS) are determined by a combination of lane number and Average Daily Traffic, with grades A through F. A, B, and C are all categories indicated no congestion, so they have been combined in this map.

Peak Hour LOS

- Not Congested
- Moderately Congested
- Highly Congested



REGIONAL TRANSPORTATION PLANNING ORGANIZATION
 Buckeye Hills - Hocking Valley Regional Development District

