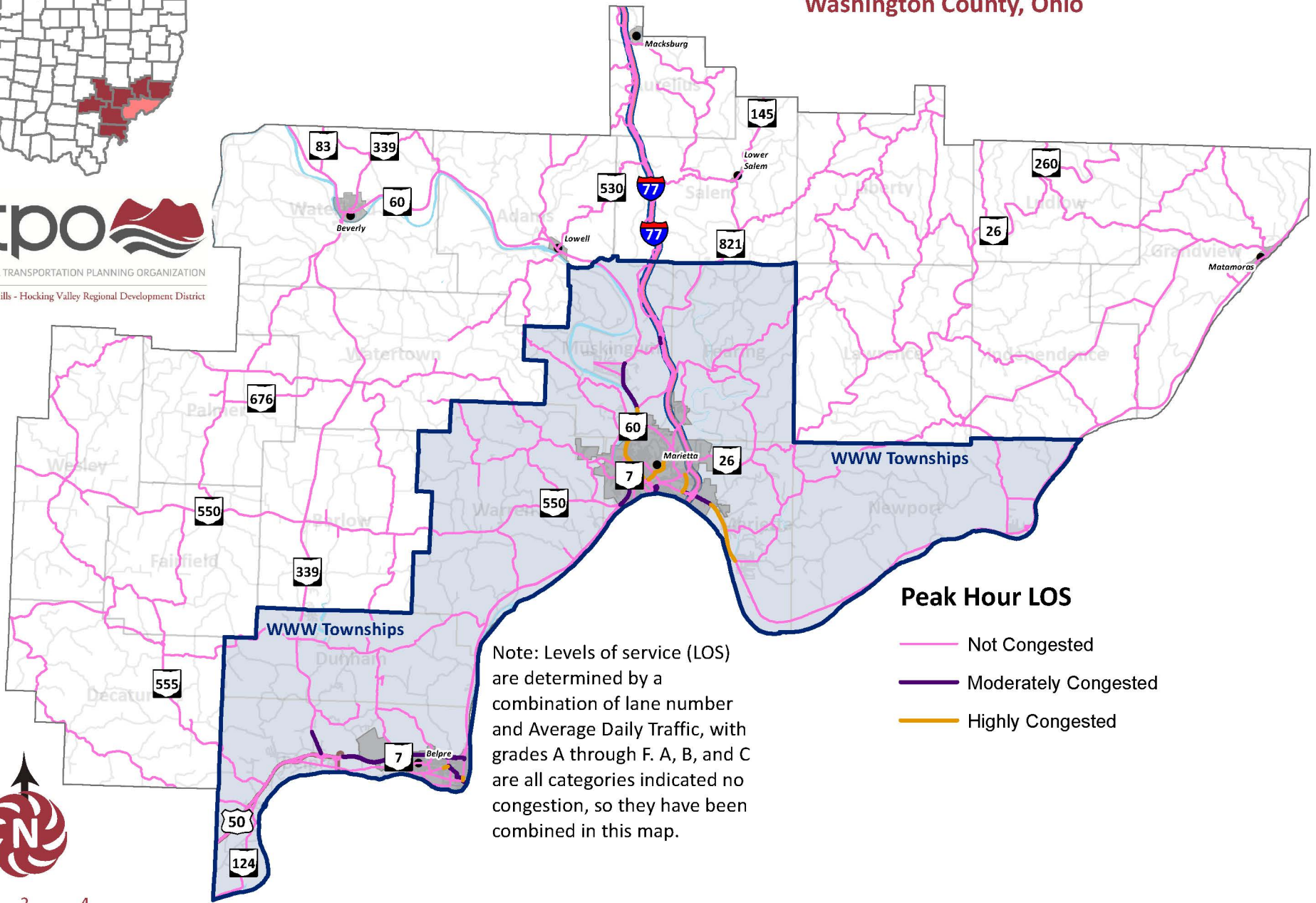
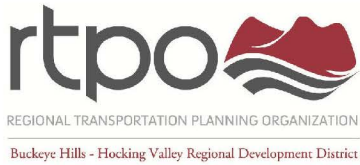
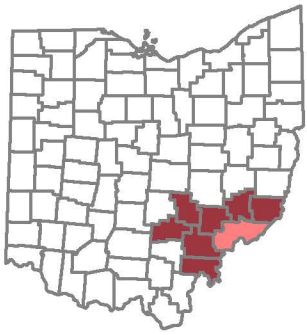


# 2040 Level of Service

## Washington County, Ohio



### Peak Hour LOS

- Not Congested
- Moderately Congested
- Highly Congested

Note: Levels of service (LOS) are determined by a combination of lane number and Average Daily Traffic, with grades A through F. A, B, and C are all categories indicated no congestion, so they have been combined in this map.



Miles